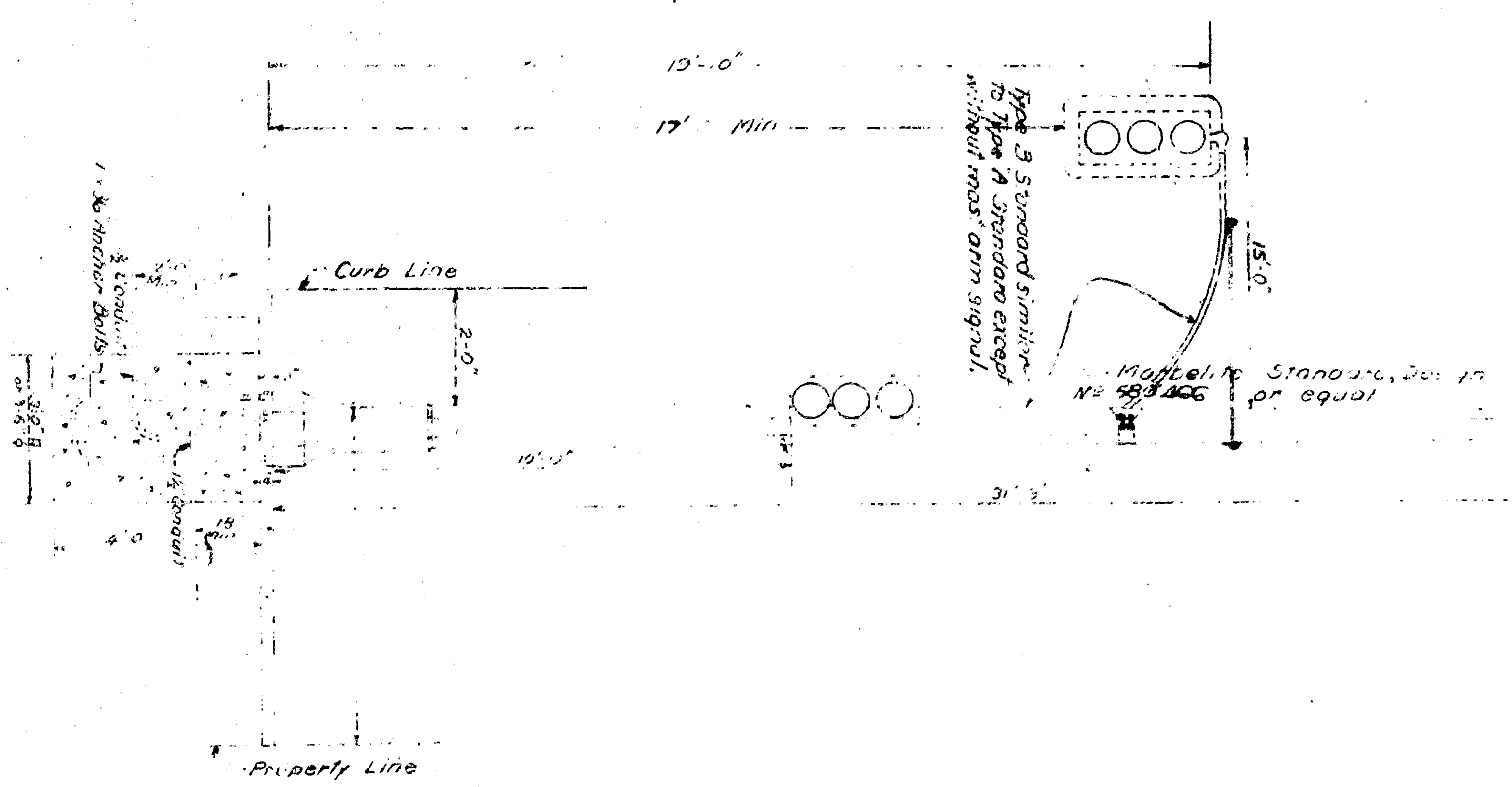
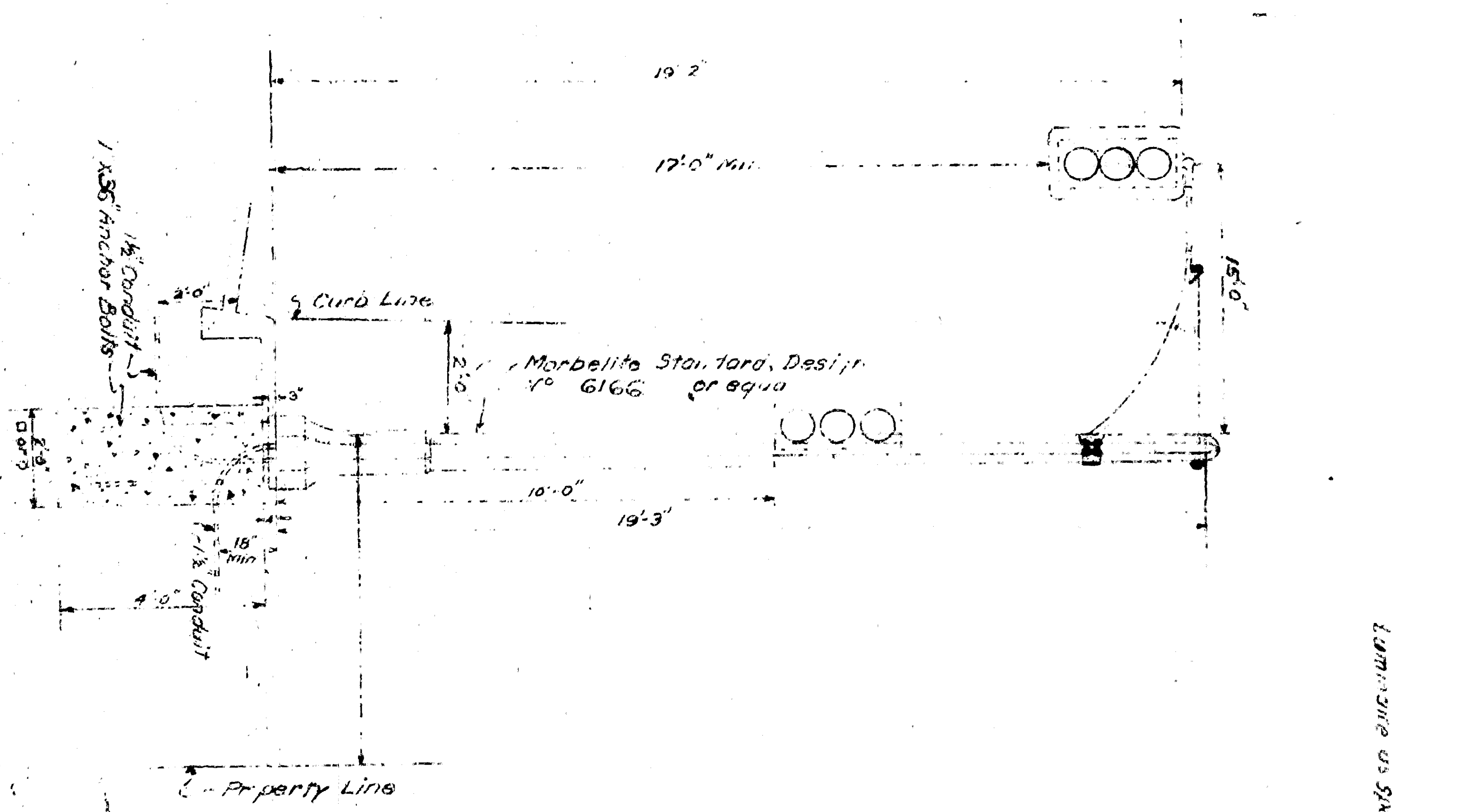


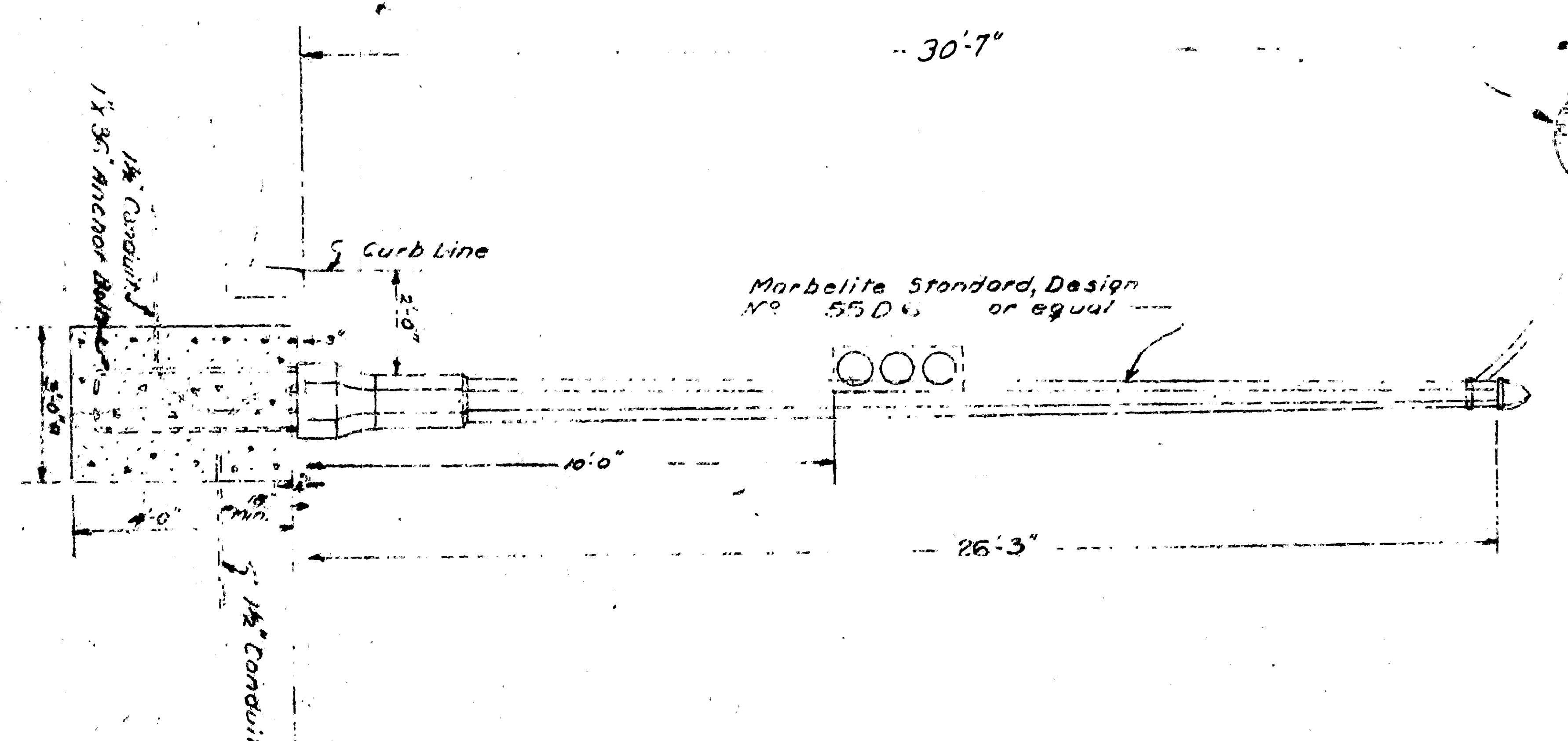
TYPE III(c) STANDARD, as shown
TYPE I(c) STANDARD, without mast arm signal



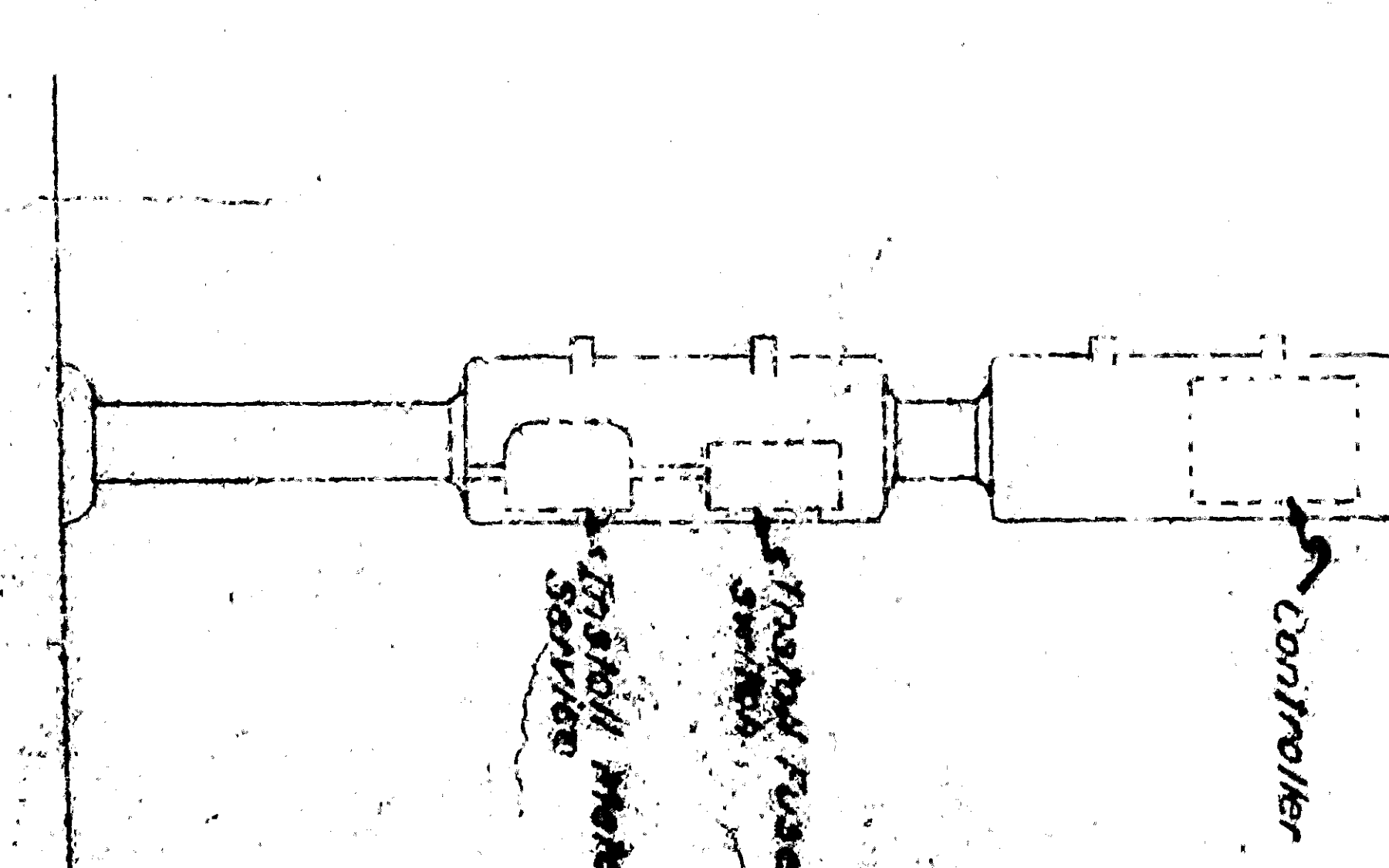
TYPE III(a) STANDARD



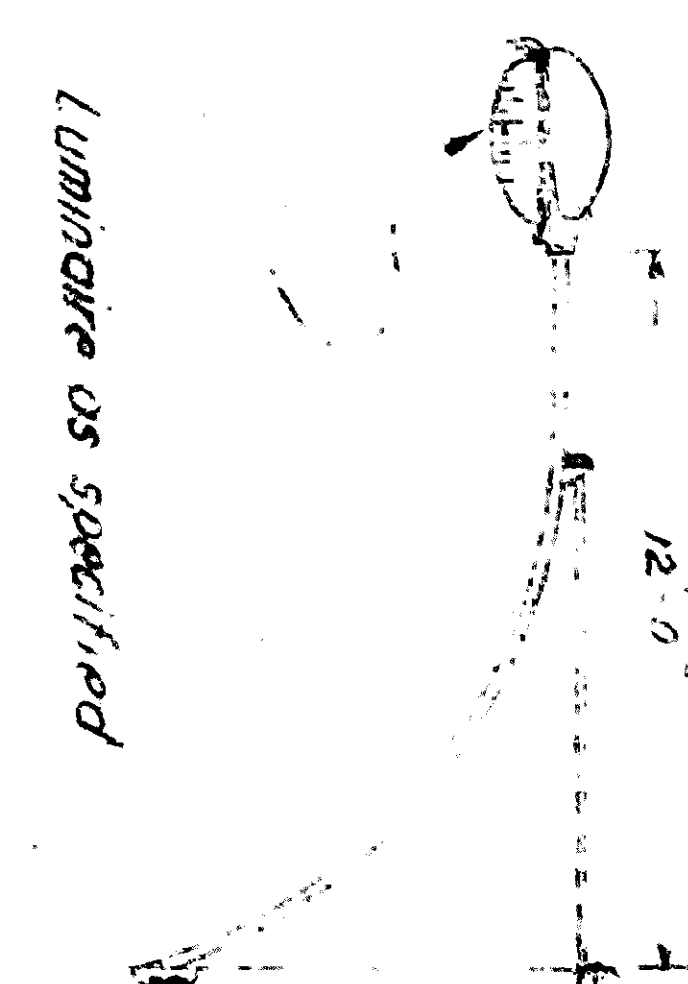
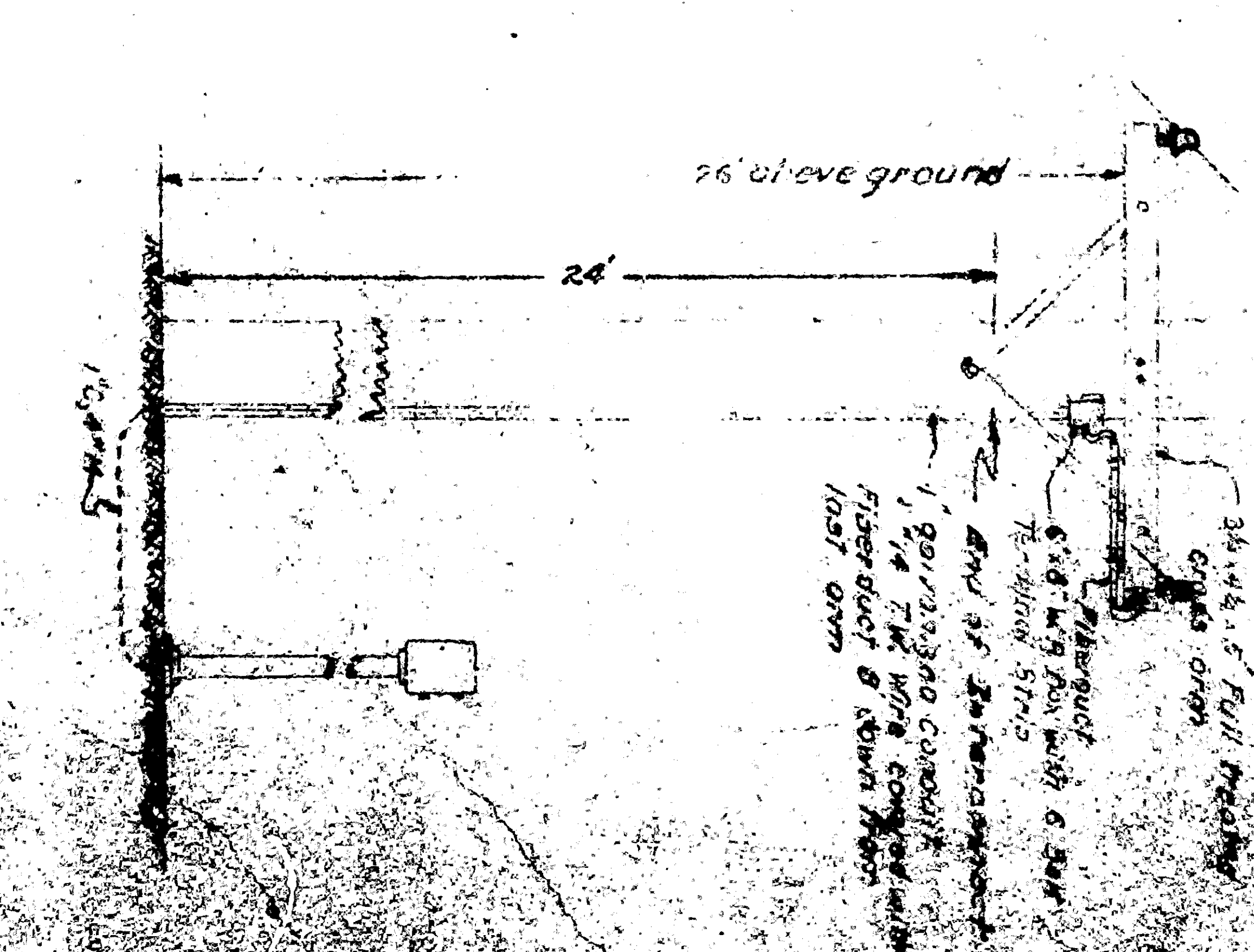
TYPE III(b) STANDARD



Typical Mast Configuration
No. 10 Scale

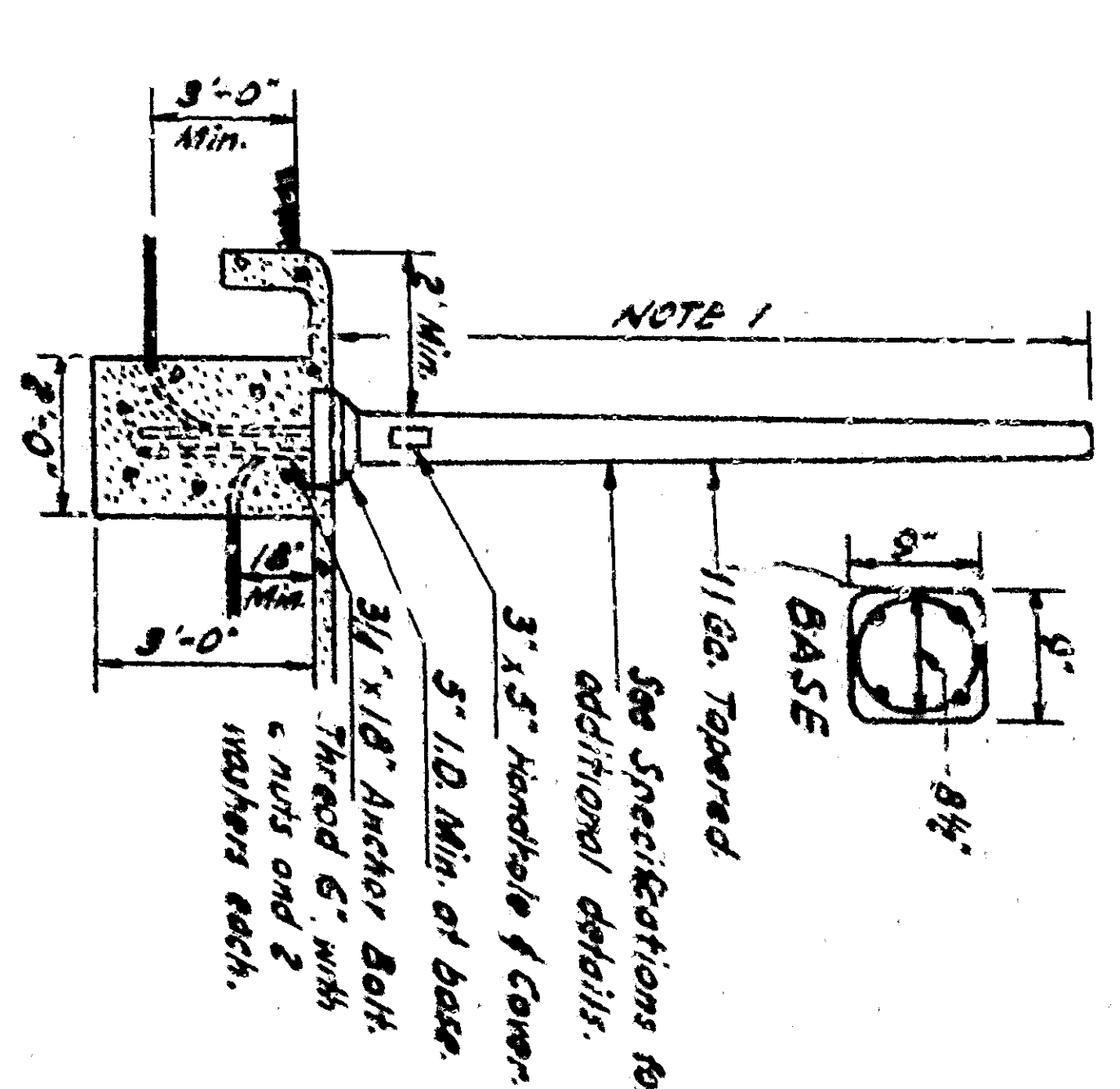


INTERCONNECT DETAILS
Scale 3/8"

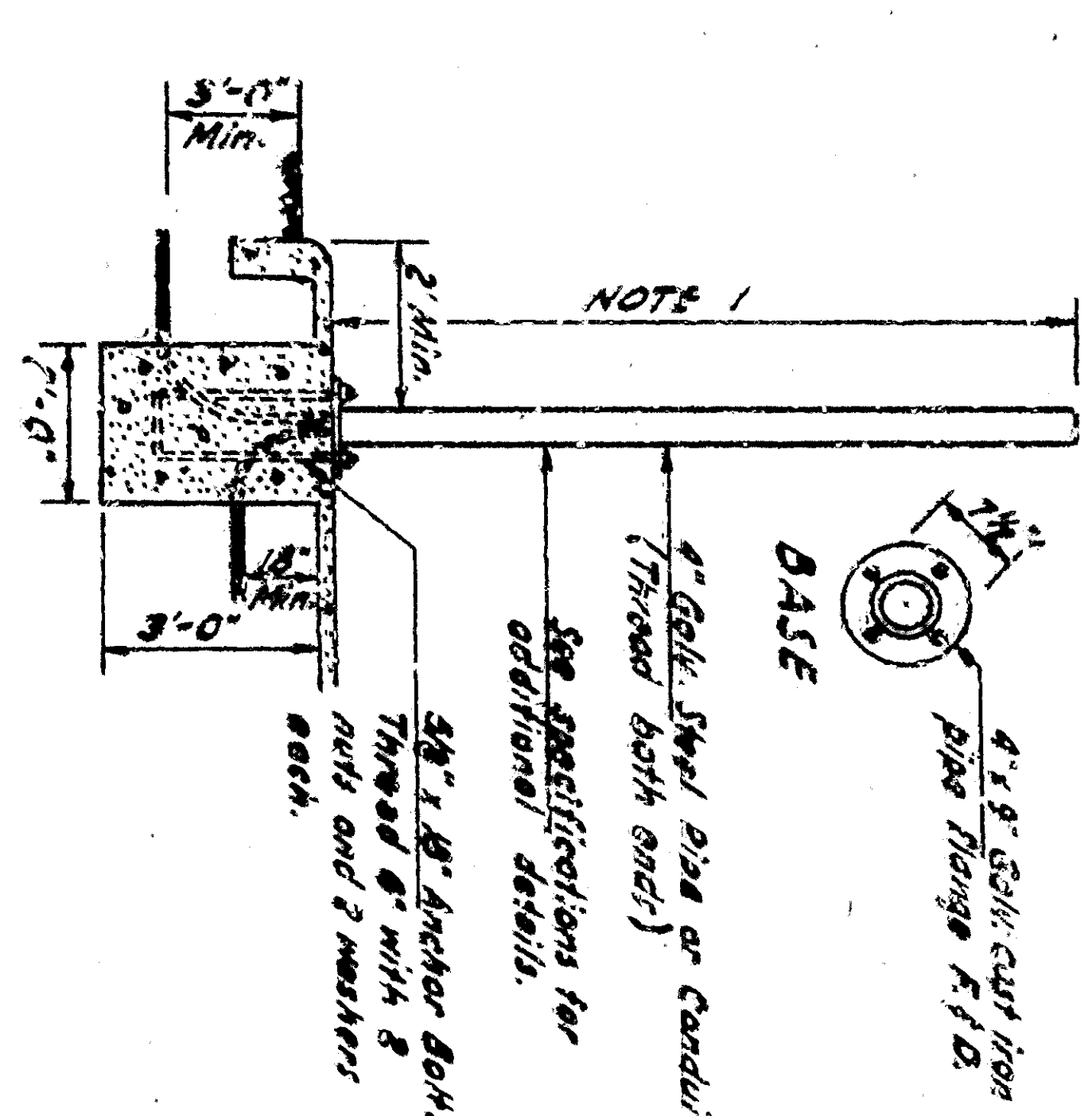


Lamp type as specified

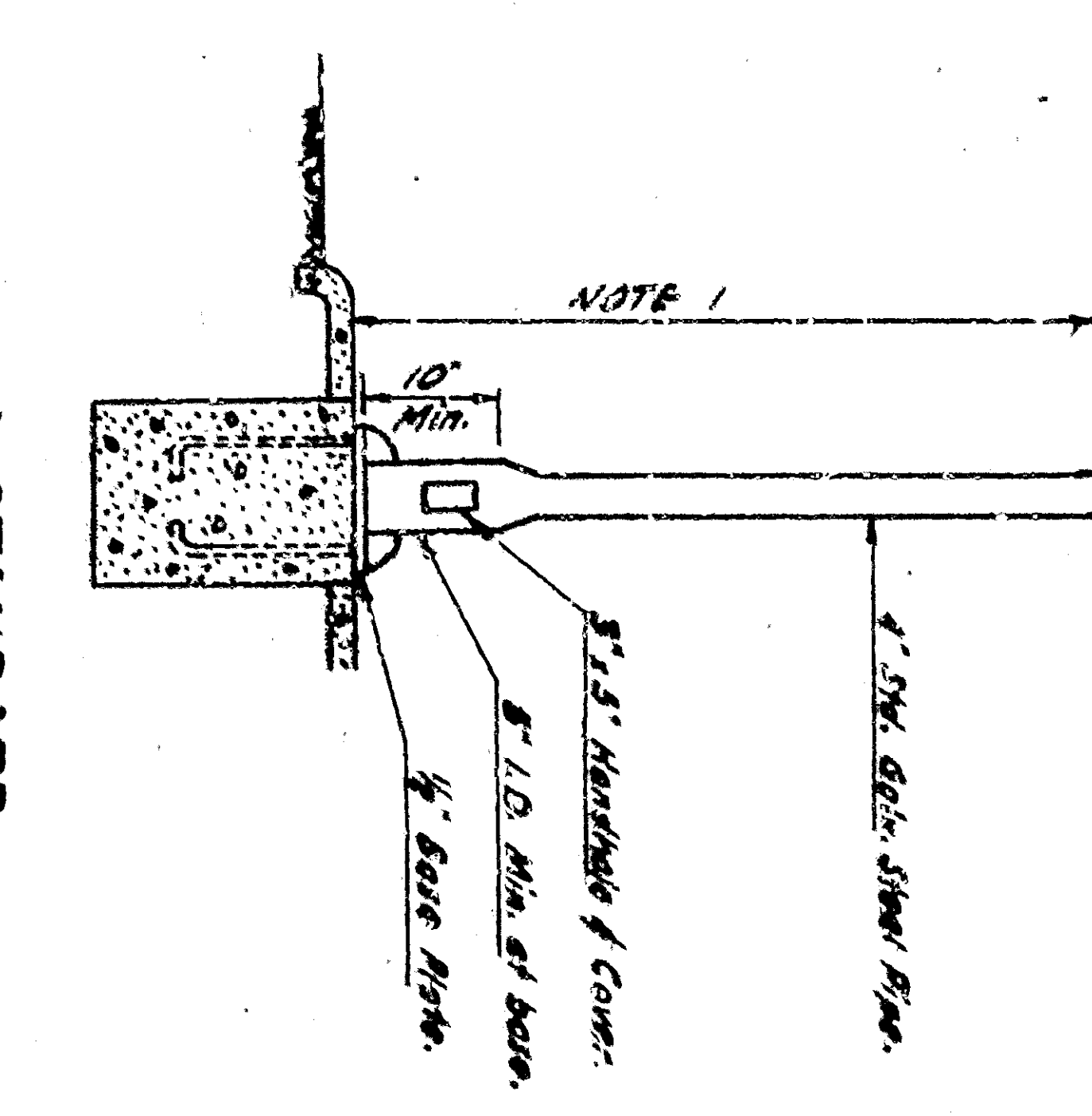
TYPE I-A STANDARD



TYPE I-B STANDARD



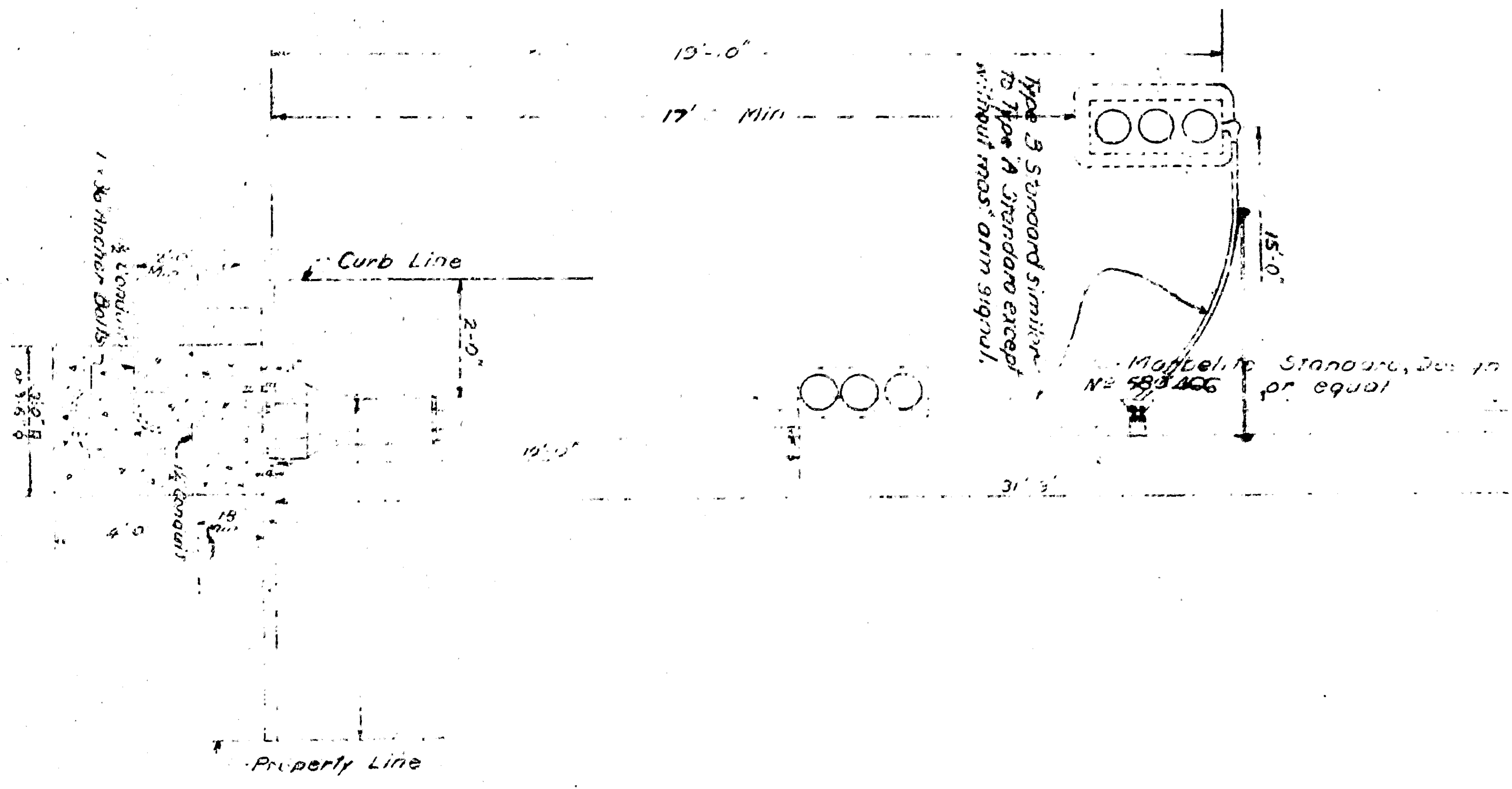
TYPE I-C STANDARD
(Mast and Arm same as in Type I-A)



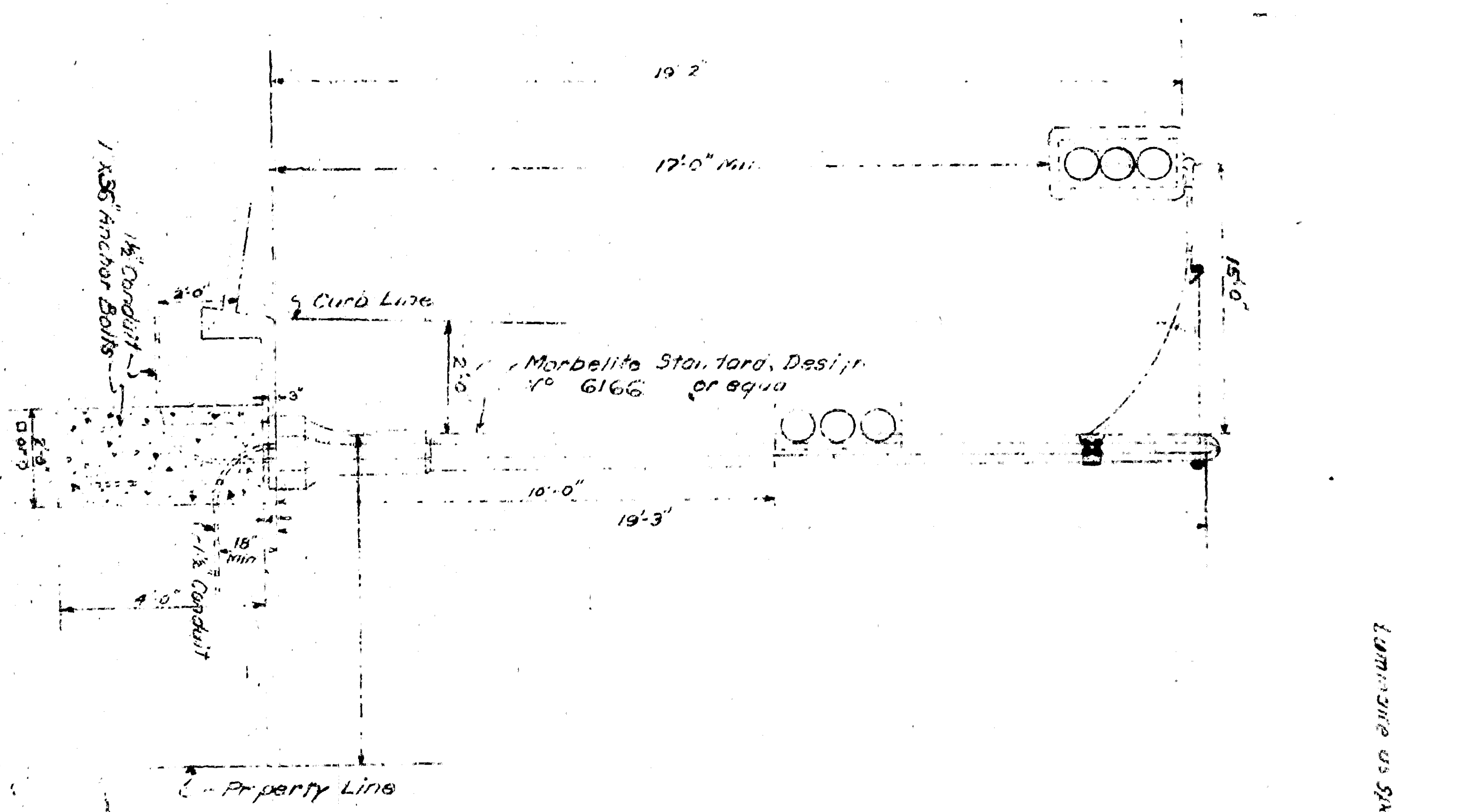
- NOTES:
1. STANDARDS SHALL BE 10'-0" MINIMUM FOR VERTICAL SIGNALS, 7'-0" FOR ROTATING SIGNALS AND LEFT-TURN VERTICAL SIGNALS.
 2. SEE PLAN FOR TYPE OF SIGNAL MOUNTING.
 3. TOP OF STANDARD SHALL BE 4'-0" O.D.
 4. COUNTRY SHALL BE 3" MAX. ABOVE FINISH SURFACE OF FOUNDATION. KANSAS AND FOR TYPES I-A I-C STANDARDS SHALL BE 2'-0" ABOVE FINISH SURFACE. KANSAS.
 5. ONE ANCHOR BOLT SHALL BE BOUND TO CONDUIT.

SIGNAL STANDARDS
NO SCALE

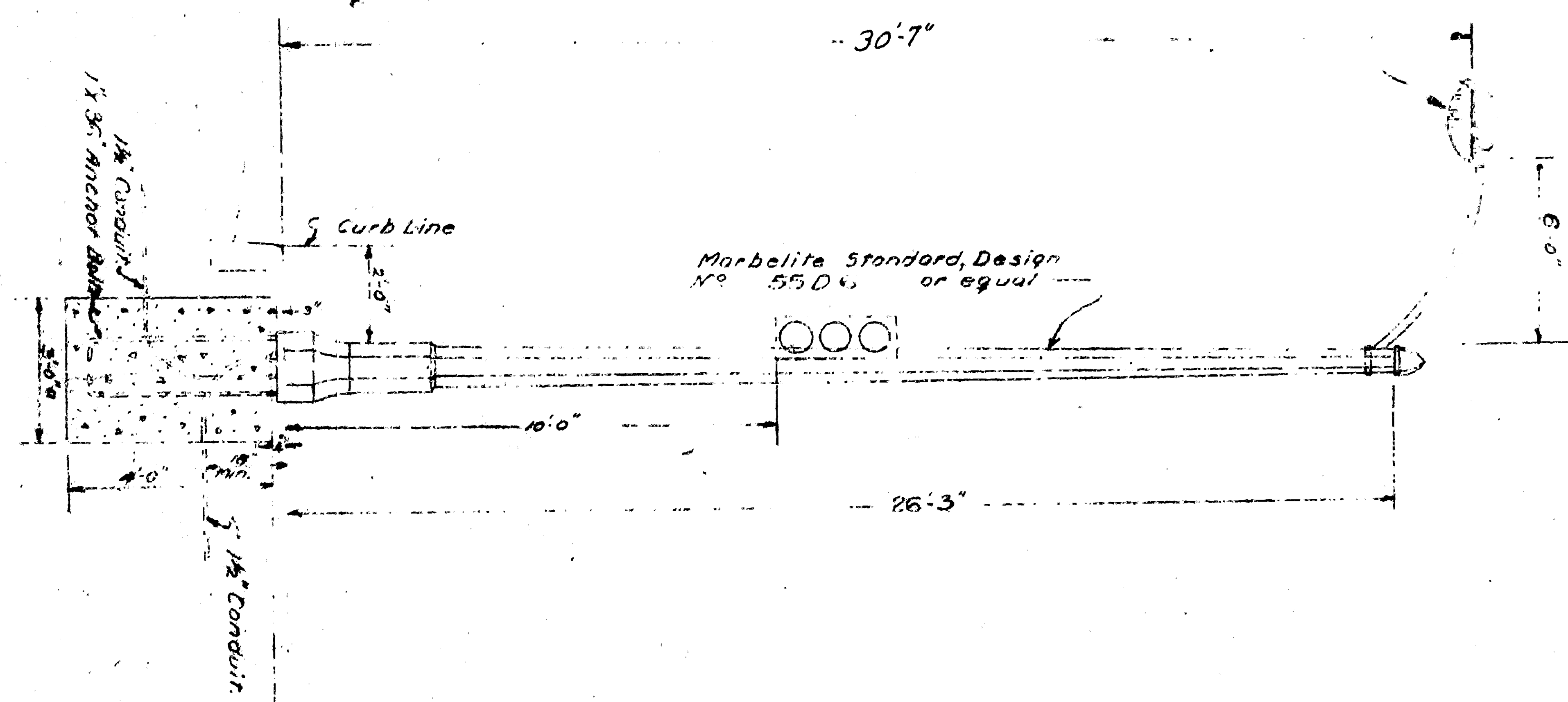
TYPE III(c) STANDARD, as shown
TYPE I(c) STANDARD, without mast arm signal



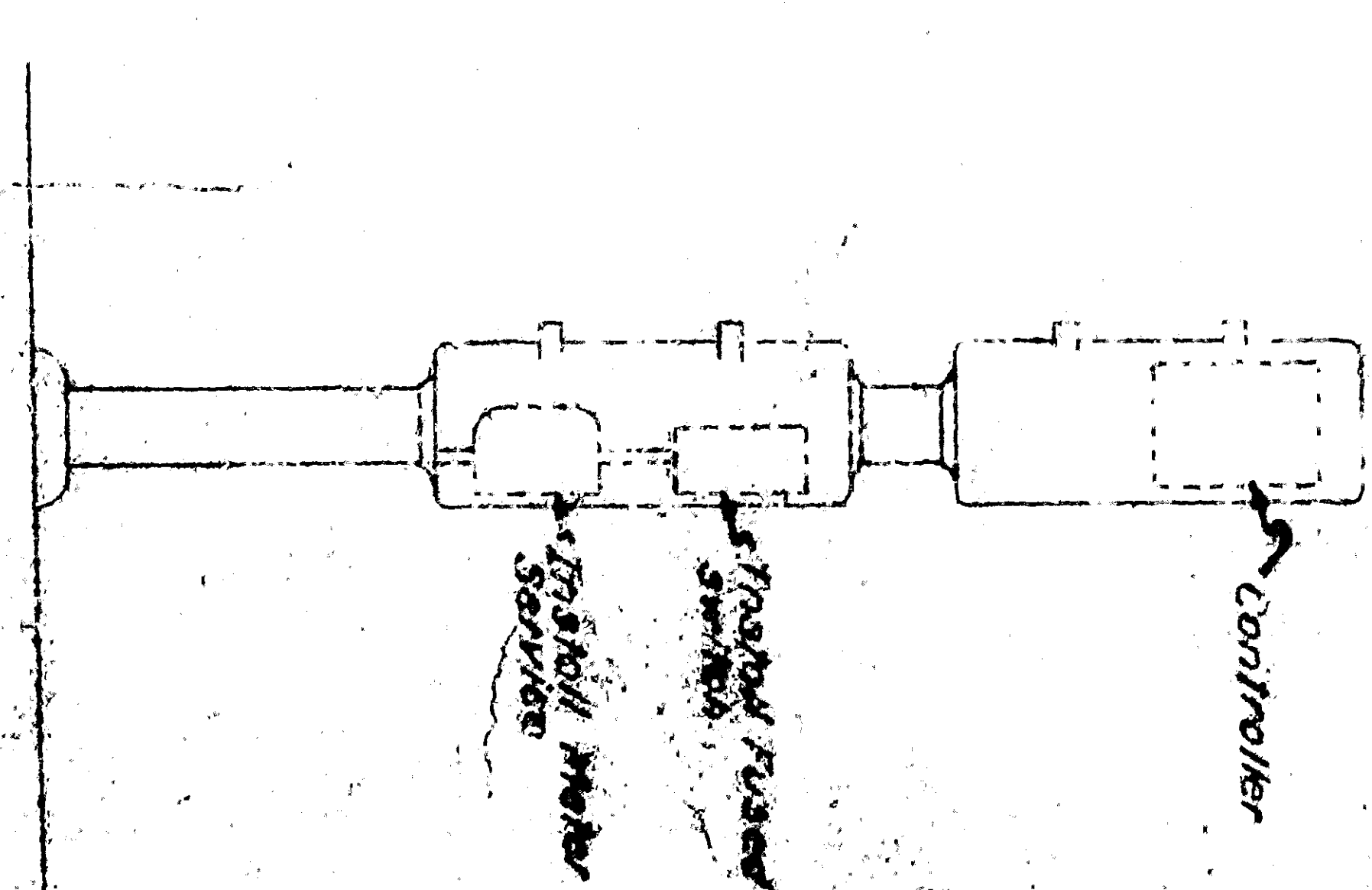
TYPE III(a) STANDARD



TYPE III(b) STANDARD

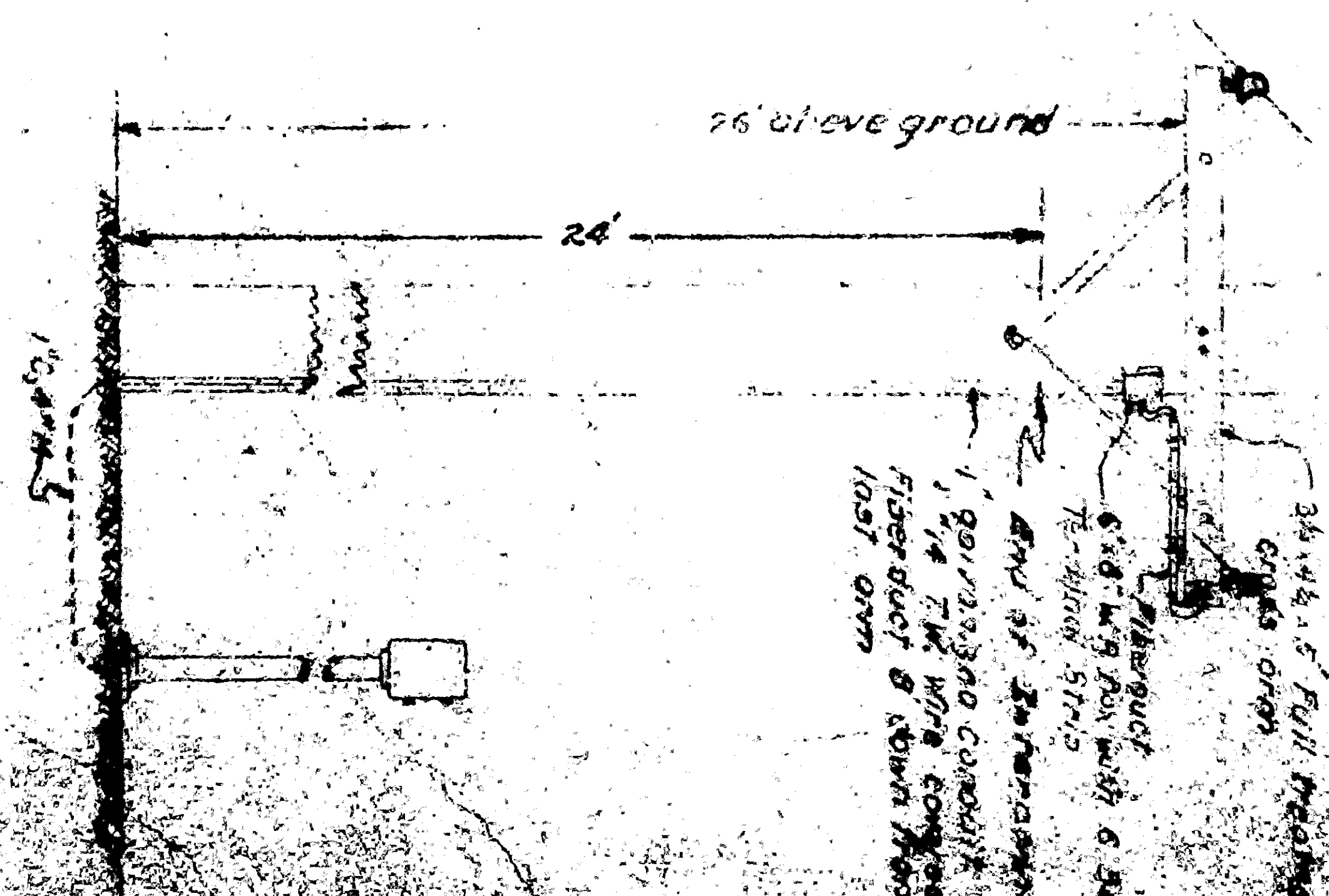


Typical Mast Arm
No. 10 Scale

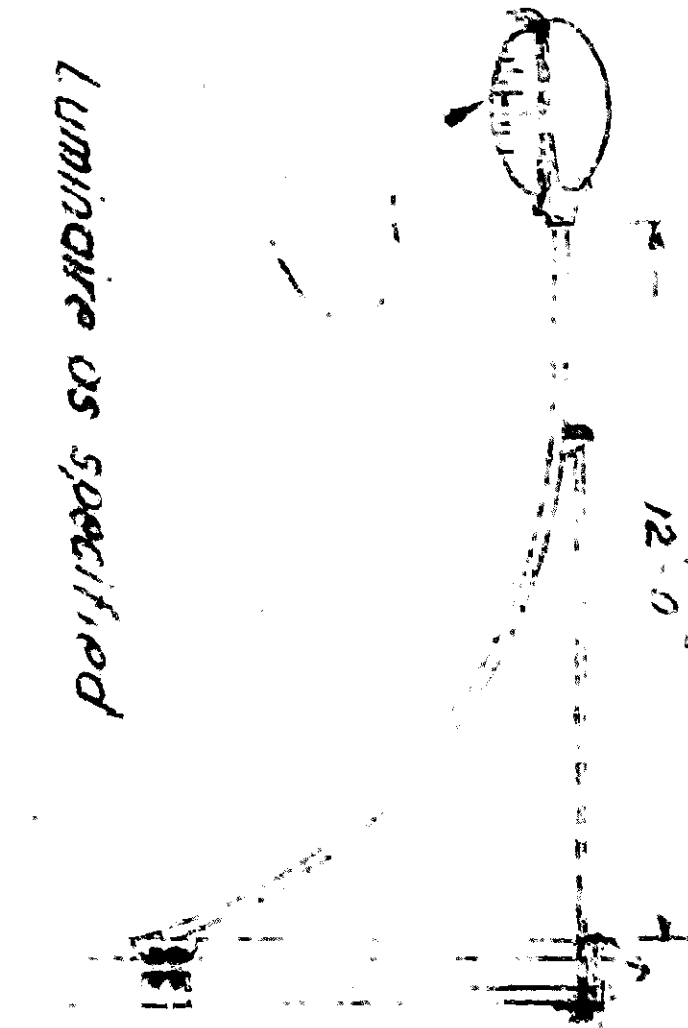


INTERCONNECT DETAILS

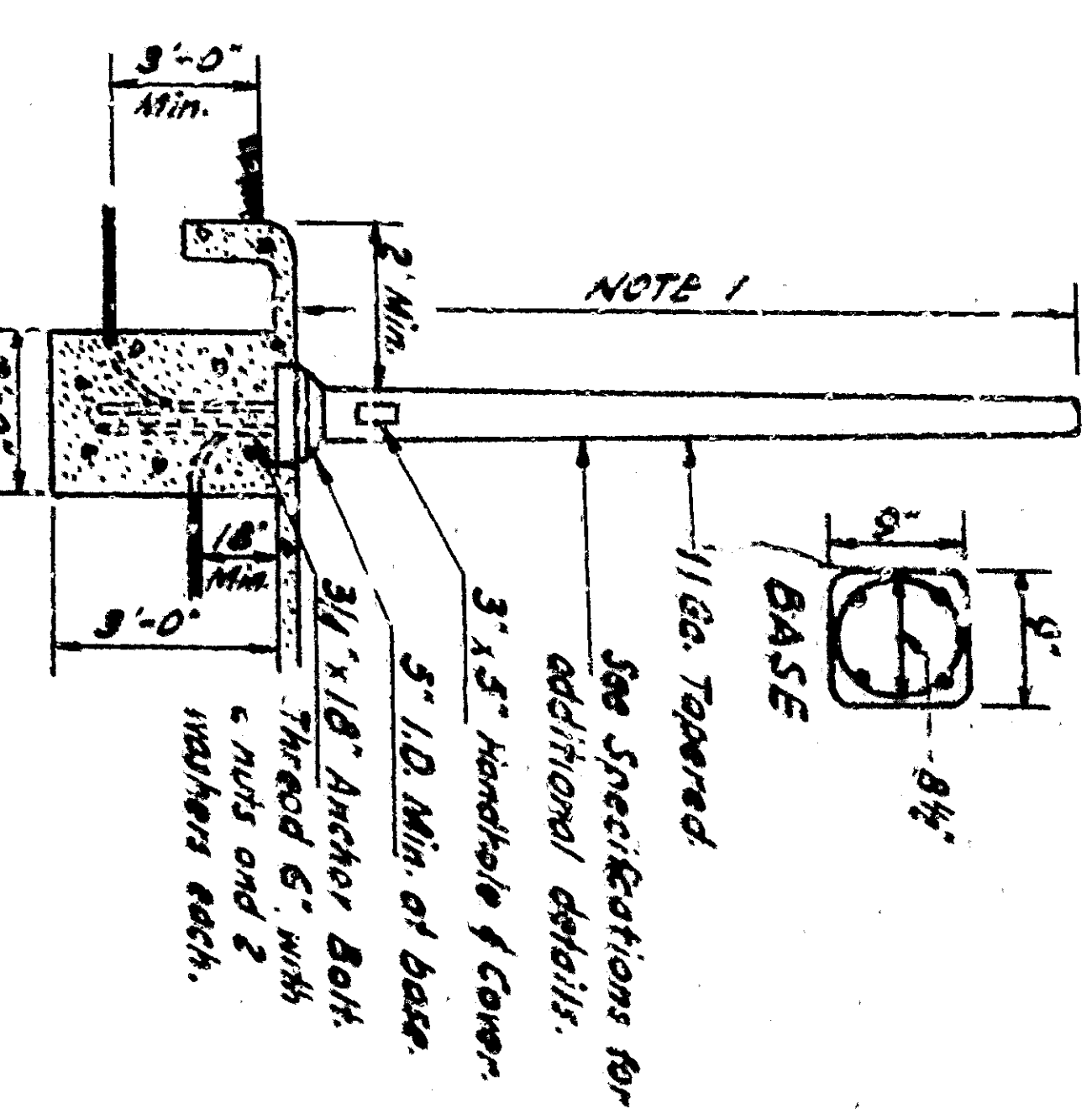
Scale 3/8"



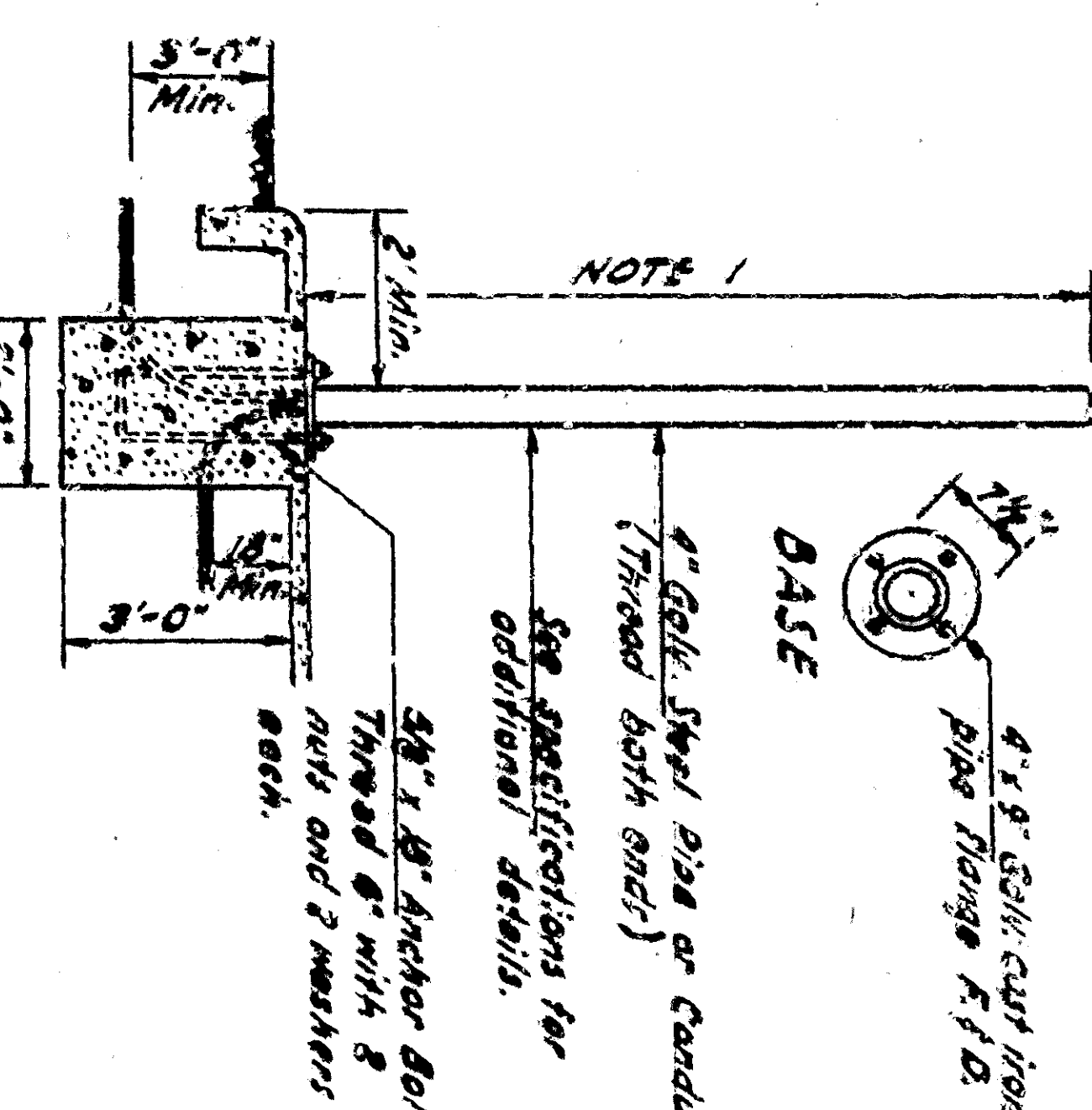
Signal Head
Signal Head Support
Signal Head Base
Signal Head Mounting
Signal Head
Signal Head Support
Signal Head Base
Signal Head Mounting



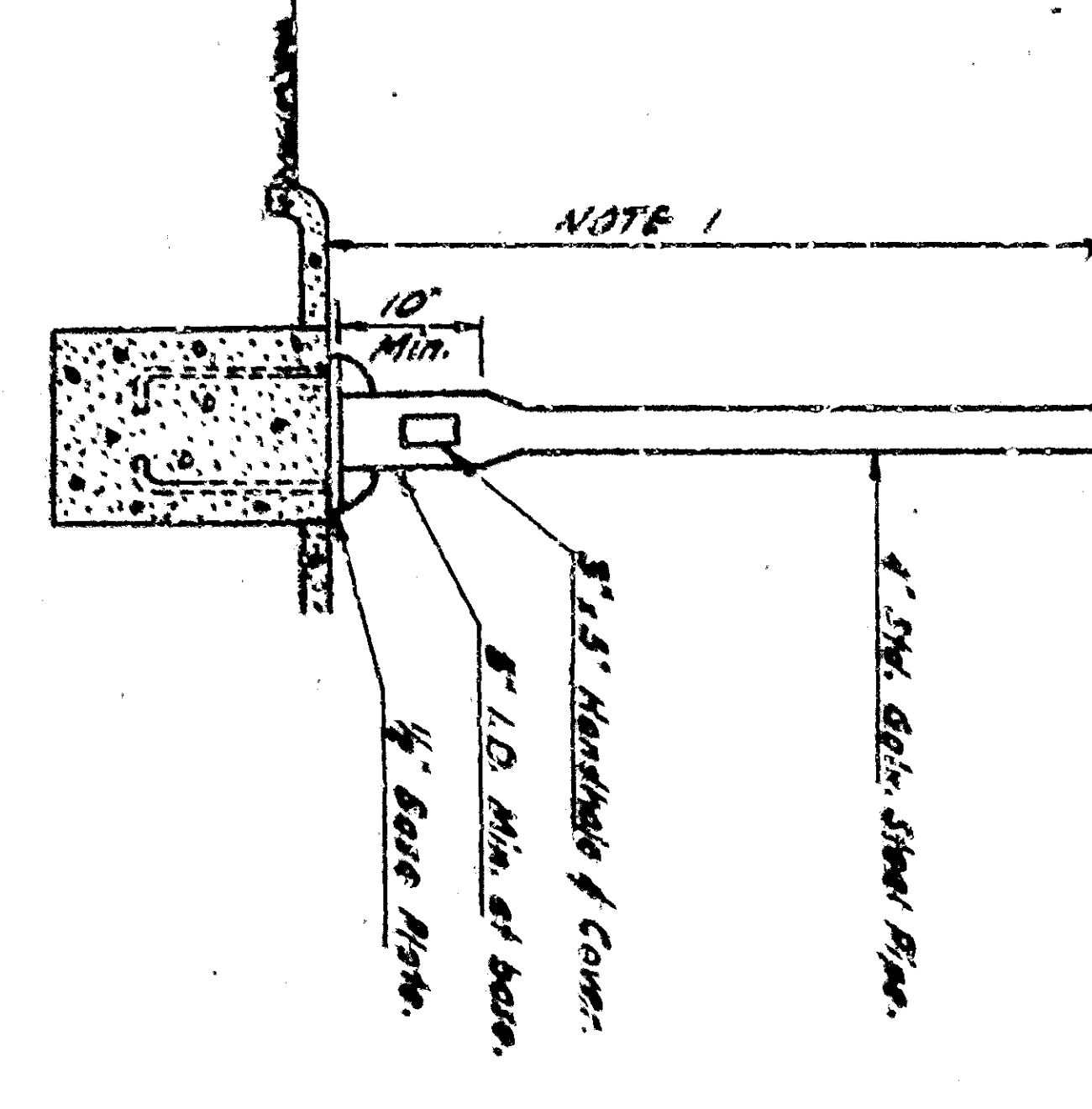
TYPE I-A STANDARD



TYPE I-B STANDARD



TYPE I-C STANDARD



- NOTES:
1. STANDARDS SHALL BE 10'-0" MINIMUM FOR VERTICAL SIGNALS, 7'-0" FOR ROTATING SIGNALS AND LEFT-TURN VERTICAL SIGNALS.
 2. SEE PLAN FOR TYPE OF SIGNAL MOUNTING.
 3. TOP OF STANDARD SHALL BE 4'-0" O.D.
 4. COUNTRY SHALL BE 3" MAX. ABOVE FINISH SURFACE OF FOUNDATION. KANSAS AND FOR TYPES I-A I-C STANDARDS SHALL BE 2'-0" ABOVE FINISH SURFACE. KANSAS.
 5. ONE ANCHOR BOLT SHALL BE BOWLED TO CONDUIT.

SIGNAL STANDARDS
NO SCALE